

CERTIFICATE OF LOCATION OF GOVERNMENT CORNER

EAST QUARTER Corner of Section 14, Township 106, Range 39, 5TH P.M.

STATE OF MINNESOTA, County of MURRAY

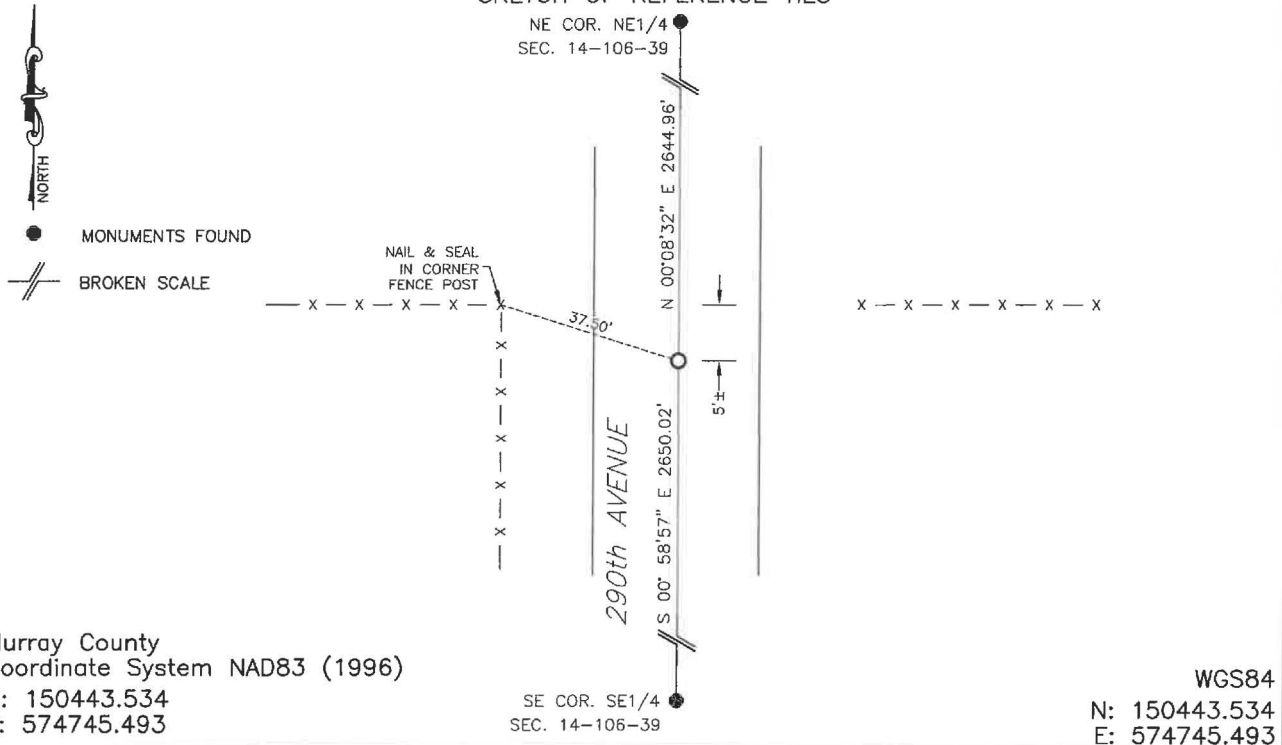
At the corner location shown on the sketch:

On 8/13/2024 found a Large field stone with ring of small stones around it.
DATE

left monument as found, lowered monument, removed monument (explain)

On 1/29/2025 placed a 5/8" iron with seal #43844
DATE

SKETCH OF REFERENCE TIES



Statement of evidence relative to this corner location is on back of page.

I hereby certify that this document and the data contained herein was prepared by me or under my direct supervision.

Daniel L. Bueltel
 Daniel L. Bueltel
 License No. 43844

3/12/2025
 DATE

MAR 13 2025
Karen Braun
 MURRAY COUNTY RECORDER

Statement of Evidence

EAST QUARTER CORNER SECTION 14, T106N, R39W OF THE 5TH P.M.

In September 1858, W.J. Neely surveyed the east township line.

In July of 1861, J.W. Myers surveyed the north, south, and west township lines.

In August of 1861, Wellman & Smoot subdivided the township.

May 10, 1914 a survey by J.W. Woolstencroft shows a lime stone and stake as the monument for the corner.

On August 13, 2024 Bueltel-Moseng Land Surveying found a large 20" field stone with several smaller stones around it and a limestone on top. Accepted monument as found and placed a $\frac{5}{8}$ " iron on the north side of the stone.

Returned on January 29, 2025 and placed an iron with seal #43844 over top of the stone.